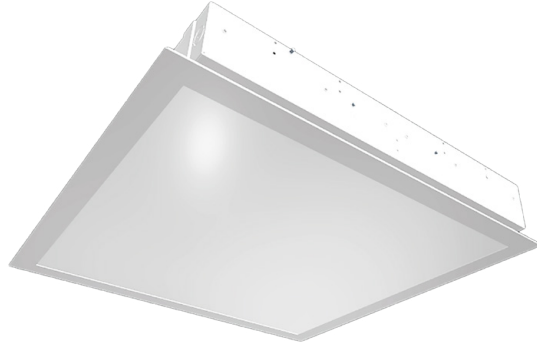


L-Grid® 2EH 2x2

Flat Panel LED Troffer



Key Features

- Energy-efficient 2x2 LED recessed troffer for both new construction or retrofit applications.
- NSF certified for controlled environments.
- Integrated battery back-up option available.
- Plenum air return option with slots available.
- Low-profile design provides flexibility for installing in low plenum areas (non-IC rated).

Electrical

- 120-277VAC input.
- 0-10V dimming standard (Mark 7 interface), excluding High Flux Level.
- Integrated constant power battery back-up accessory available.
- Operating Temperature for Basic, Standard, and Medium Flux Level: -40°C to +45°C (-40°F to +113°F)
- Operating Temperature for High Flux Level: -40°C to +30°C (-40°F to +86°F) ²

Mounting

- Easy to install in standard T-Grid ceilings.

Construction

- Extruded aluminum frame with steel backing prevents light leak and is built for superior strength and durability.
- Frosted white lens offers complete shielding and uniform light distribution that's glare-free.
- Weight: 15.0 lbs. (6.8kg)

Optics

- Edge-to-edge illumination with no visible bright spots or pixelation.
- Industry leading LEDs with 3500K, 4000K, and 5000K CCT (minimum 80 CRI).
- Lumen Maintenance: >200,000 hours (L70) ¹

Warranty

- Backed by US LED's industry-leading Ten-Year Warranty.

Project	Date
---------	------

Catalog Number	Type
----------------	------

Product Performance Summary

Lumen Output	Up to 21,480 lumens
Efficacy	Up to 123 LPW
CRI	≥ 80 CRI
Available CCT	3500K, 4000K & 5000K
Warranty	Ten-Year Warranty

Product Overview

For new construction or one-for-one replacement applications, the L-Grid® 2EH 2x2 troffer stands ready. It is the total lighting solution, providing an appealing and unobtrusive presence while simultaneously delivering extraordinary light through a flat, frosted lens. With convenient installation options available, integrating this luminaire into your workplace will be simple and straight-forward, regardless of the application.

Product Applications

- Classrooms
- Conference Rooms
- Office Spaces
- Hallways/Corridors
- Industrial/Warehouses
- Convenience Stores
- Retail Areas
- Health Care Facilities
- Food Preparation Areas
- Commercial Spaces

Product Certifications/Approvals

- UL Listed
- Complies with UL1598 and CSA 22.2
- Suitable for Damp Locations
- DLC Listed
- NSF Certified
- RoHS Compliant



Ordering Information

GTR2							
Series	Size	CCT	CRI	Input Voltage	Flux Level	Air Return	Lens
	22EH 2x2	35 3500K	80 80 CRI	UNV2 120-277V	B Basic	A Air Return	F Frosted
		40 4000K			S Standard	N No Air Return	
		50 5000K			M Medium		
					H ² High		

Example: **GTR2-22-50-80-UNV2-M-N-F**

Accessories (Sold Separately)	
DW-22TX	2x2 Drywall Flange Kit
ILB-CP12A	Constant Power LED Emergency Driver
CMR-10-ADC	Extended Range 360° Ceiling Mount Occupancy Sensor
IP710-LFZ	Leviton® Wall Control Dimmer

1. US LED product 'Lifetimes' refer only to the LED light engine, not the power source, and are based on the Illuminating Engineering Society's TM21 Projected Lumen Maintenance methodology at a 25° C / 77° F ambient temperature. The lifetimes are solely meant to be a guide for expected LED degradation and not a warranty or predictive of their actual life, which can be affected by ambient temperatures and other factors.

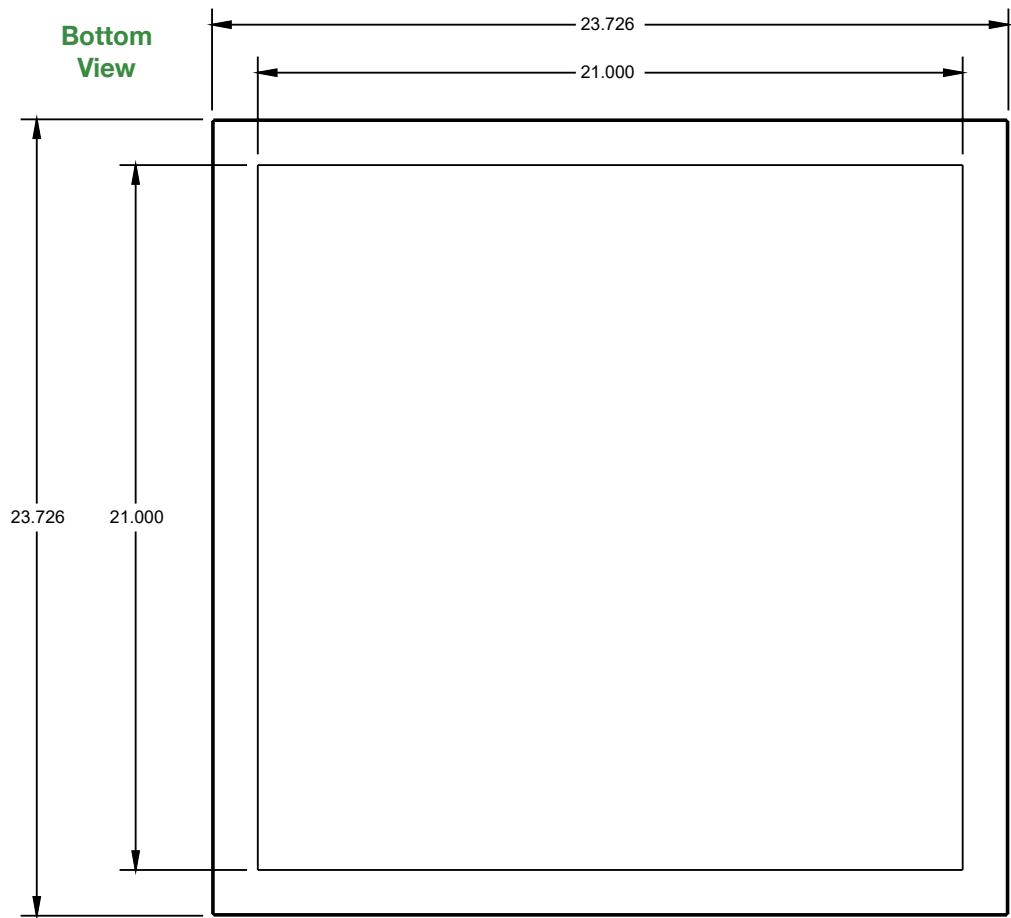
2. Non-Insulation Contact: Must be installed in plenum air return grid ceiling. Install with minimum spacing between: (A) Center-to-center of adjacent luminaires: 48" (1200mm) (B) Top of luminaires to overhead building member: 10" (250mm) (C) Luminaire center to side building member: 24" (600mm)

L-Grid®2EH 2x2

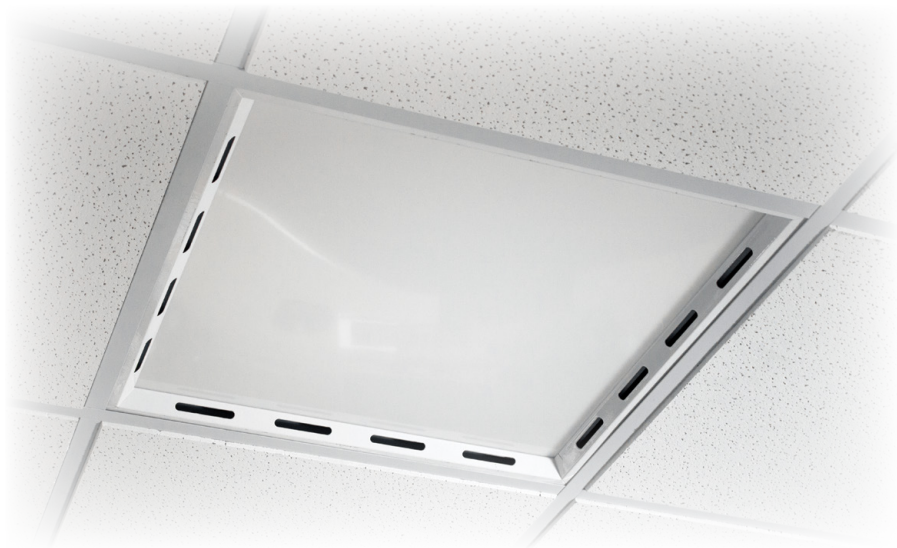
Flat Panel LED Troffer



Dimensions



Air Return Shown
[Option A]



L-Grid®2EH 2x2

Flat Panel LED Troffer

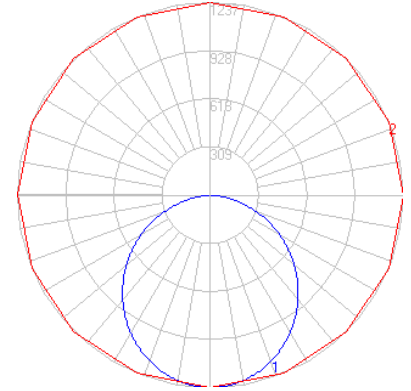
Performance Data

Luminaire Photometric Data

Model Number	GTR2-22EH-50-80-UNV2-B-X-F
Issue Date	01/22/2016
IESNA	LM-63-2002
Lamp	LED
Total Input Watts	27.6
Total Lumens	3,400
Efficacy	123 LPW
Spacing Criterion	0°-180° = 1.24 90°-270° = 1.24

Zonal Lumen Summary

Zone	Lumens	% Fixt
0-30	949.82	27.90
0-40	1547.07	45.50
0-60	2711.44	79.70
0-90	3402.38	100.00
0-180	3402.38	100.00



Model	System Level Power	Delivered Lumens	Efficacy	CCT	L70 Calculate Life	L85 Calculate Life
GTR2-22EH-35-80-UNV2-B-X-F	27.6W	3,120L	113 LPW	3500K	200,000 Hours	115,000 Hours
GTR2-22EH-40-80-UNV2-B-X-F	27.6W	3,245L	118 LPW	4000K	200,000 Hours	115,000 Hours
GTR2-22EH-50-80-UNV2-B-X-F	27.6W	3,400L	123 LPW	5000K	200,000 Hours	115,000 Hours
GTR2-22EH-35-80-UNV2-S-X-F	42.5W	4,505L	106 LPW	3500K	200,000 Hours	115,000 Hours
GTR2-22EH-40-80-UNV2-S-X-F	42.5W	4,765L	112 LPW	4000K	200,000 Hours	115,000 Hours
GTR2-22EH-50-80-UNV2-S-X-F	42.5W	5,010L	118 LPW	5000K	200,000 Hours	115,000 Hours
GTR2-22EH-35-80-UNV2-M-X-F	64.6W	6,120L	95 LPW	3500K	200,000 Hours	115,000 Hours
GTR2-22EH-40-80-UNV2-M-X-F	64.6W	6,500L	101 LPW	4000K	200,000 Hours	115,000 Hours
GTR2-22EH-50-80-UNV2-M-X-F	64.6W	6,840L	106 LPW	5000K	200,000 Hours	115,000 Hours
GTR2-22EH-50-80-UNV2-H-X-F	195.7W	21,480L	110 LPW	5000K	181,000 Hours	81,000 Hours

L-Grid®2EH 2x2

Flat Panel LED Troffer

Accessories

DW-22TX 2x2 Drywall Flange Kit

Overview

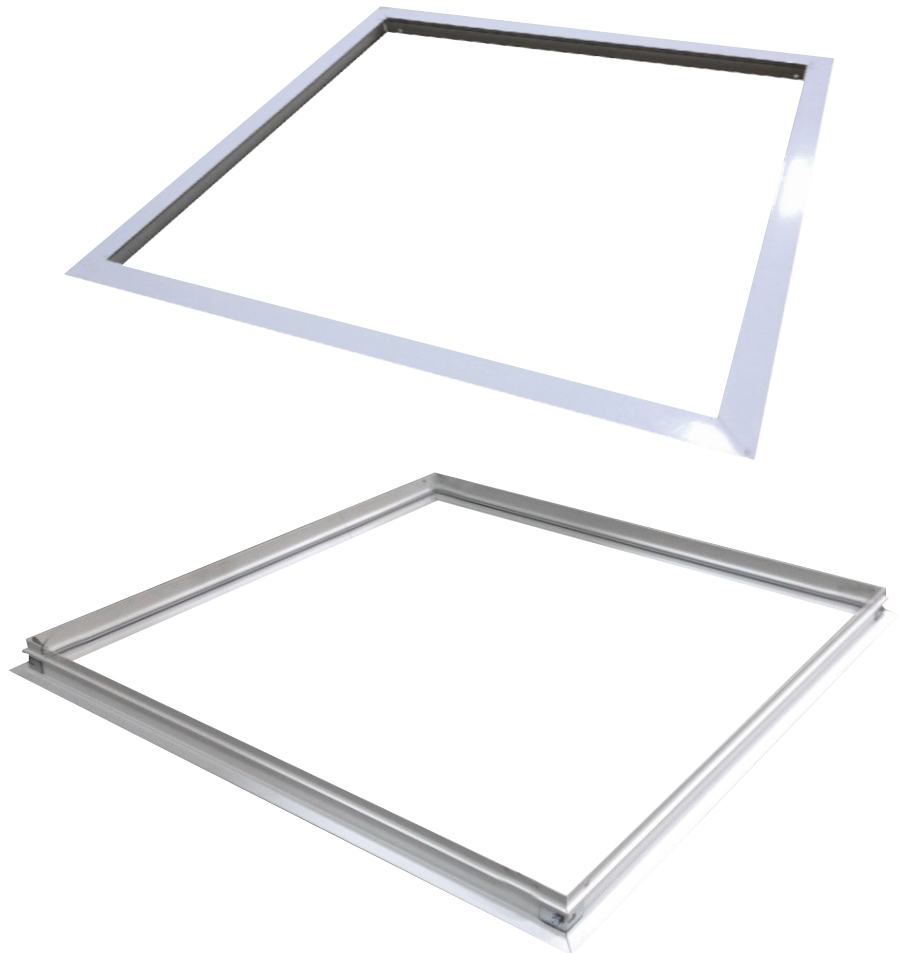
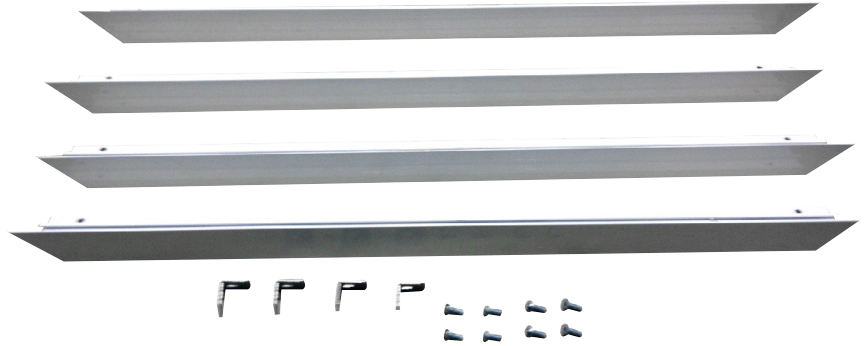
Drywall flange kits act as T-Bar frames to support recessed troffer luminaires in wood, drywall, or plaster ceilings. From the room side, flange kits mimic the appearance of T-Bars in a baked white enamel finish.

Key Features

- 22 gauge steel, pre-painted white finish.
- All kits include: (2) side flanges, (2) end flanges, (4) corner brackets, and (8) thread cutting screws.

Specifications

- 2x2 Rough Opening: 24.66" x 24.66"



L-Grid®2EH 2x2

Flat Panel LED Troffer

Accessories

ILB-CP12A - Constant Power LED Emergency Driver

Overview

The ILB-CP12 from IOTA Engineering is a UL Listed and Classified LED emergency driver that allows the same LED fixture to be used for both normal and emergency operation. In the event of a power failure, the ILB-CP12 switches to the emergency mode and operates the existing fixture for 90 minutes. The unit contains a battery, charger, and converter circuit in a single can and is available in different mounting configurations for individual fixture requirements. The ILB-CP12 will operate an LED array load at 12 watts with constant power at a rated output voltage of 10V-60V.

Key Features

- UL Listed (UL924/UL1310) for factory and field installations.
- Patented constant power design maintains illumination throughout the 90-minute runtime with no light degradation.
- Two-wire universal AC input.
- Output Class 2 compliant.
- Six mounting configurations available.
- Long life high temperature Ni-Cad battery.
- Includes single-piece TBTS test switch and charge indicator accessory kit.
- Meets or exceeds all NEC, IBC, and Life Safety Code Emergency Lighting requirements.

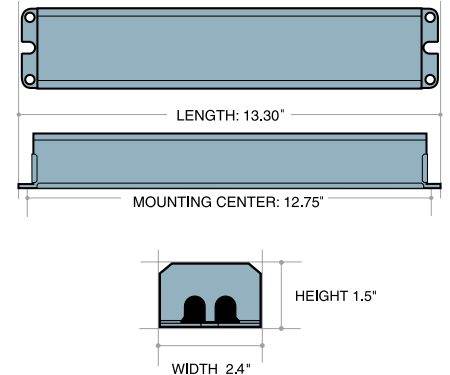


Specifications

Input Voltage.....	(Universal) 120-277VAC, 50/60Hz
Input Rating (120V/277V).....	3.7 Watts (max)
Output Voltage ¹	10-60VDC Class 2 Compliant
Output Current.....	1.2A (@10VDC) - 0.2A (@60VDC)
Output Power.....	12 Watts (constant)
Max. AC Driver Output Current.....	3Adc
Power Factor	≥ 0.9
Emergency Operation.....	90 minutes
Operating Temp.....	0° to 55° C
THD	< 20%
Battery.....	High Temp Nickel-Cadmium 24 Hour Recharge 7-10 Year Life Expectancy
Weight.....	(-A, -R) 4.0 lbs. (-B, -TM) 3.5 lbs. (-J, -R-J) 3.75 lbs.
Certifications	cUL Listed and classified for factory and field installation

1. Max. output voltage in emergency mode is 58.5 VDC with a + tolerance of 1.5 volts

ILB-CP12-A: 13.3" x 2.375" x 1.5"
(mounting center 12.75")



Emergency Lumen Performance - ILB-CP12

Approx. Luminaire Efficacy	Minute 1	Minute 45	Minute 90
100 lm/W	1200	1200	1200
110 lm/W	1320	1320	1320
120 lm/W	1440	1440	1440
130 lm/W	1560	1560	1560

L-Grid®2EH 2x2

Flat Panel LED Troffer

Accessories

IP710-LFZ - Leviton® Wall Control Slide Dimmer

Overview

Leviton offers many products that will help lower electrical costs and add convenience to everyday living. By simply replacing standard switches with dimmers reduces energy consumption and extends bulb life. IllumaTech Preset Dimmers feature a low-profile fluid slide bar movement for fine adjustment of light levels or fan speeds that's accompanied by an easy-to-use ON/OFF preset switch. The switch provides quick ON/OFF control without disturbing your favorite pre-selected settings. Most feature a built-in LED locator light, as well.

Key Features

- 1200VA, 120/277 Volt AC 60Hz
- Single-Pole & 3-Way
- IllumaTech Preset Electro-Mechanical Electronic 0-10VDC LED Power
- Supply Dimmer - White face assembled on device. Ivory and Light Almond available.



Specifications

Switch Type: Single-Pole & 3-Way

Style Name: IllumaTech

Type: Electro-Mechanical

Load Type: Electronic 0-10VDC

0-10VDC LED Power Supply

Load Rating: 1200VA

Voltage: 120/277 Volt AC 60Hz

Action: Standard ON/OFF

Protection: Radio/TV Filter

Color: White Ivory Light Almond

Standards and Certifications: UL/CSA

